

## Hydraulic Safety Lock Bottom Lift Cylinder SB362

### Description

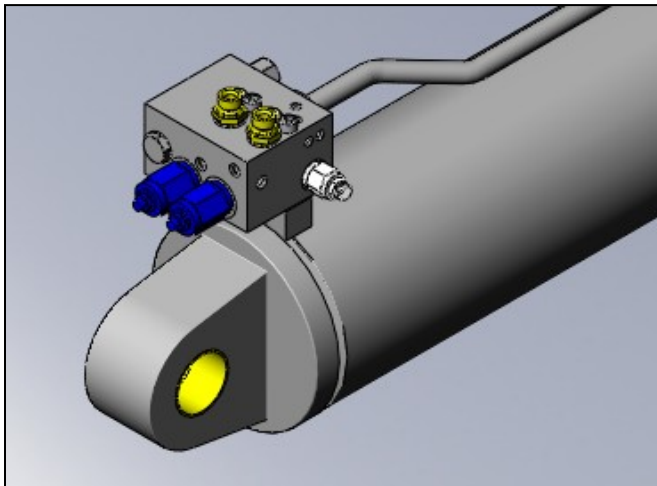
The SB362 is a SB330 with the top arm lengthened. The longer outreach and higher lift capacity mean that the arms can potentially get in a position whereby the pressure in the rod side of the bottom lift cylinder gets to the point whereby the backpressure on the over centre cartridge causes it to open and allows the bottom lift cylinder to slowly runaway and cavitate.

A hydraulic lock has been introduced into the 362 model. This hydraulic lock prevents the operator from extending the cylinder any further once the rod side pressure reaches 4000psi. The operator will still be able to retract the bottom lift cylinder.

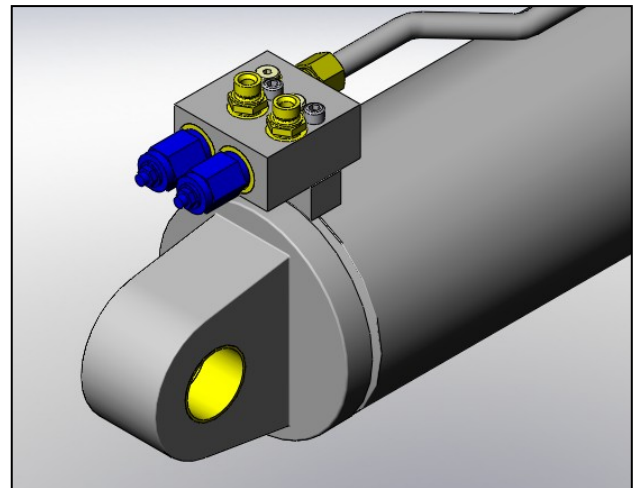
### Models and Markets

All SB362 models

### Bills of Material



362 Bottom lift cylinder with hydraulic cylinder lock  
Manifold: HC-41400



362 Bottom lift cylinder without hydraulic cylinder lock  
Manifold: HC-23366

### Backward Compatibility

The block is compatible with the "Block Cartridge Double Port", HC-23366 as illustrated above.

### Disadvantages

This lock can also be activated if the bottom lift cylinder is fully retracted and system pressure is allowed to build up to 4000 psi. If the lock is unintentionally activated in this manner, the operator will be required to wait for a short period of time to allow the pressure to dissipate and the lock release.